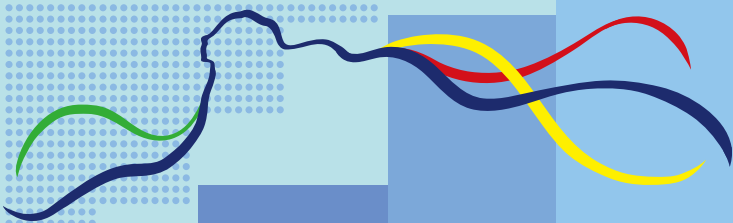


Hong Kong Correctional Services



Statistics

2015



www.csd.gov.hk



Average daily penal population at correctional institutions : 8 413 persons 2015

% by Gender



% by Category



% by Age

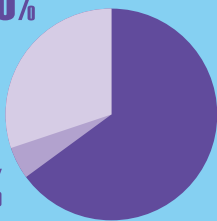


Admission of high risk convicted persons:

147 Persons

Persons from other countries

30%



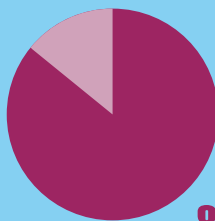
5%

Persons from the Mainland, Taiwan and Macao

65%

Local persons

14% Other offences



86%

Drug-related offences

Over 10 000 persons under management of Correctional Services Department

(As at 31.12.2015)

Penal population 8 438 Persons

 **70%** Local persons

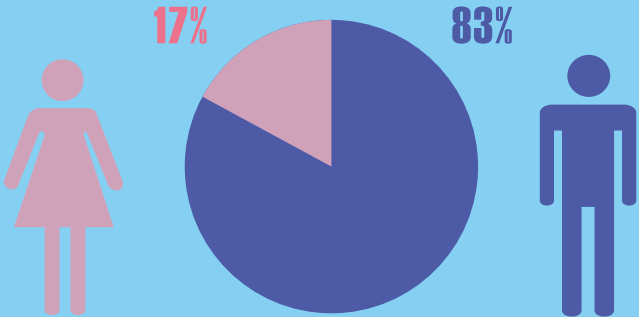




 **12%** Persons from the Mainland, Taiwan and Macao

 **18%** Persons from other countries

Rehabilitated persons under supervision after release 1 991 Persons



Providing secure custody for the well-being of society

Escape of persons in custody

2015: No successful case
2014 :

Joint searching / special searching / night raid operations

2015: 8 038 operations **42%**
2014 : 5 673 operations **↑**

Acts of indiscipline

2015: 3 671 charges **2%**
2014 : 3 592 charges **↑**

Violent cases

2015: 522 cases **8%**
2014 : 567 cases **↓**

Assault against CSD officers

2015: 15 cases **6%**
2014 : 16 cases **↓**

Self-harm cases

2015: 72 cases **6%**
2014 : 68 cases **↑**

Providing rehabilitation programmes for the well-being of society

2015

2014

Risks and needs assessment programme matching of persons in custody (PICs)



26 985

No. of participants

26 925

Psychological and welfare support for PICs



205 609

No. of counselling sessions

187 697

Public examinations taken by PICs



1 017

No. of candidates

688



1 103

No. of examination papers taken

763



Passing rate **75%**

72%

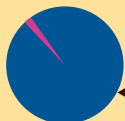
Vocational qualification examinations and trade tests taken by PICs



2 882

No. of examination papers and trade tests taken

2 649



Passing rate **97%**

96%

Reaching out to the Community to promote support for offender rehabilitation

Collaboration with over **80** NGOs to help offenders reintegrate into the community



Job Fair



Interest Groups



Group Counseling



NGO Forum

**Strengthening community education
to promote a law-abiding, drug-free life and
support for offender rehabilitation among the youths**

**Rehabilitation Pioneer Project
Over 30 000 participants**



The Reflective Path



Personal Encounter with Prisoner Scheme



Extended Training Camp

Education Talks

**Creation and
Rehabilitation**

Student Forum

Green Haven Scheme

HK Correctional Museum

Human resources

Recruitment of CSD manpower for 2015-16

Officer

51 persons

Assistant Officer

260 persons

(Including officers anticipated
to be recruited in 1st quarter of 2016)



Recruitment plan for 2016-17

Officer

50 persons

Assistant Officer

240 persons



**CSD officers
escorting PICs for
medical treatments**

39 000 man-days per year on average
from 2013 to 2015
